

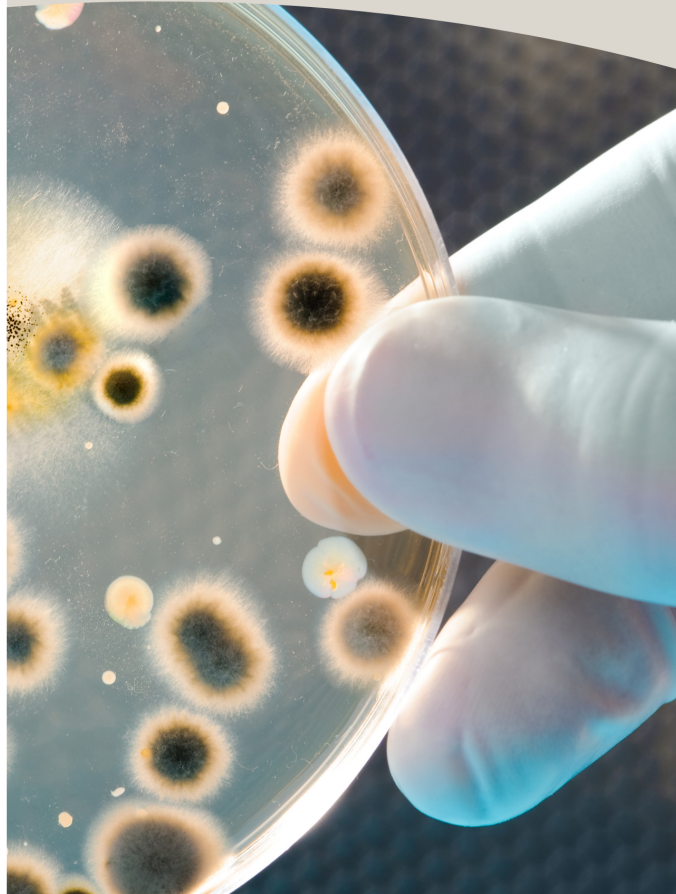
Periodontal Pathogen Testing

What is it?

A bacterial DNA test, also known as a saliva test, identifies specific bacteria causing gingivitis and periodontal diseases among the numerous species found in plaque samples.

This information helps dentists and oral hygienists prescribe and recommend targeted, effective treatment.

The test also detects current oral diseases, predicts future issues, establishes pre-therapy baselines, verifies post-therapy pathogen eradication, and indicates poor treatment response in refractory cases.



JIS

DENTISTRY

The oral DNA test allows DNA dentistry to:

- ✓ Gain knowledge of bacterial levels
- ✓ Assess gum recession and tooth loss
- ✓ Explain, evaluate and monitor scientific test results
- ✓ Identify and observe periodontal disease
- ✓ Identify what bacteria causes disease

How does a test for periodontal bacteria benefit you?

- **LESS INVASIVE**
- **TEST RESULTS AVAILABLE SOONER THAN BLOOD TESTS**
- **GREATLY ASSISTS IN DETERMINING THE CORRECT COURSE OF TREATMENT**
- **IDENTIFIES BIOLOGICAL MARKERS THAT PUT YOU AT RISK FOR INFLAMMATION**
- **NO NEED FOR X-RAYS**



TAKING THE DNA TEST

Put simply, gingivitis and periodontal disease is a bacterial infection. Each type of bacteria has its genetic material. DNA testing provides a more accurate result than culturing the bacteria.



HOW IT'S DONE

The doctor places a small paper point in the gum tissue they believe may be infected. In only a few seconds, the paper absorbs the genetic material needed for a DNA sample. The sample is put in a vial and forwarded to the lab, where the lab techs analyze it. Sedation is not necessary for this test, and it is completely painless.



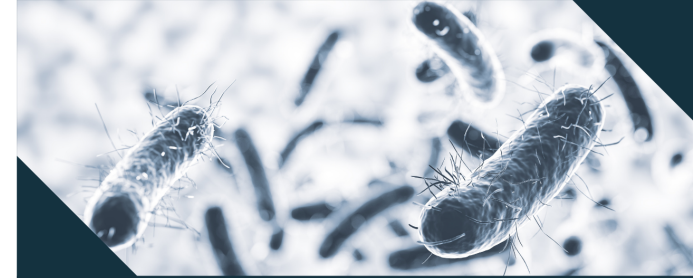
WHAT DOES THE RESULTS TELL US?

The lab results help the doctor determine the risk of bone loss, gum disease and possible factors that may cause dysbiosis and prevent optimal health



JJS

DENTISTRY



ADDRESS:

WATERFRONT

Waterway House North, 3
Dock Rd, Victoria & Alfred
Waterfront, Cape Town, 8001

DURBANVILLE

Vineyards Office Park, 99 Jip
De Jager Dr, De Bron, Cape
Town, 7530

PHONE:

WATERFRONT

021 424 5172

DURBANVILLE

021 203 4043

WEB:

www.jjteeth.co.za